

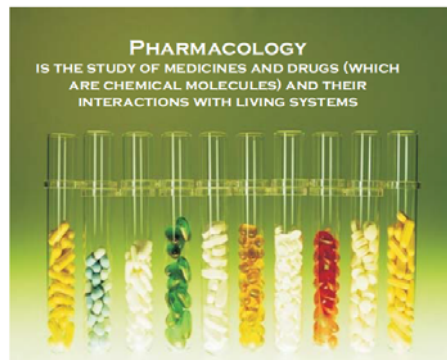
Living with epilepsy: How can research help?

Prof Janet Mifsud

Department of Clinical Pharmacology and Therapeutics
University of Malta



**DEPARTMENT OF CLINICAL
PHARMACOLOGY AND THERAPEUTICS**
FACULTY OF MEDICINE AND SURGERY
UNIVERSITY OF MALTA



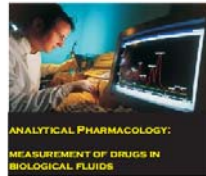
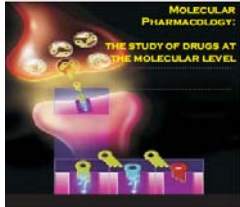
CLINICAL PHARMACOLOGY
IS THE STUDY OF DRUGS IN HUMANS

THERAPEUTICS
IS THE USE OF MEDICINES TO DIAGNOSE, PREVENT AND
TREAT ILLNESS

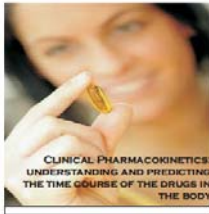




**DEPARTMENT OF CLINICAL
PHARMACOLOGY AND THERAPEUTICS**
FACULTY OF MEDICINE AND SURGERY
UNIVERSITY OF MALTA



PHARMACOLOGY



Research at CLPH:

- **P4 Medicine: predictive, preventative, personalised and participatory medicine**
 - Understanding and predicting the levels of antiepileptic drugs in adults and children
 - This leads to better dosage and a reduction in adverse side effects especially in special populations eg children and adults



Research at CLPH:

in conjunction with Department of Paediatrics and Department of Neurology, MDH

- Pharmacoepidemiology of antiepileptic medicines in children
- Understanding medicine compliance (adherence in epilepsy)
- Understanding the pharmacokinetics of new antiepileptic medicines
- Gender differences in epilepsy
- Epilepsy in women of child bearing age



Research at CLPH: EU projects and publications



DESIRE
Development & Epilepsy

Strategies for Innovative Research to Improve Diagnosis, Prevention and Treatment in Children with Difficult to Treat Epilepsy



Functional Genomics and Neurobiology of Epilepsy: a Basis for New Therapeutic Strategies



Epilepsy priorities in Europe: A report of the ILAE-IBE Epilepsy Advocacy Europe Task Force

******Michel Baulac, **††**Hannelin de Boer, **‡**Christian Elger, **§§**Mika Glynn, **¶¶**Riitta Kälviäinen, ******Ann Little, **††**Janet Mifaud, **‡‡**Emilio Perucca, **§§§§**Adria Pitkanen, and **¶¶¶**Philippe Ryvlin

Epilepsia, ******(*)11-9, 2015
doi: 10.1111/epi.13201

Are we failing to provide adequate rescue medication to children at risk of prolonged convulsive seizures in schools?

J Helen Cross,^{1,2} Suzanne Wait,³ Alexis Arzimanoglou,⁴ Etrow Beghi,⁵ Christine Bennett,⁶ Lieveen Lagae,⁷ Janet Mifaud,⁸ Dieter Schmidt,⁹ Gordon Harvey¹⁰



EU Projects in conjunction with CMEA



EU Projects in conjunction with CMEA

- 2004-2007 PAMs: EU funded Grundtvig project together with the aim of creating a curriculum on Epilepsy for Professionals Allied to Medicine with Germany and Hungary



EU Projects in conjunction with CMEA



Workshop:
"SUPPORTING DIVERSITY,
INCLUSIVE EDUCATION, AND (RE-) INTEGRATION
INTO WORK OF OLDER PEOPLE AND
THOSE WITH ADDITIONAL NEEDS"

ABSTRACTS



25th May 2014, Ankara, Turkey

- 2012-2014 MOTION: EU Leonardo project on transition of young persons with disability from school to the workplace with Turkey and Germany.

